

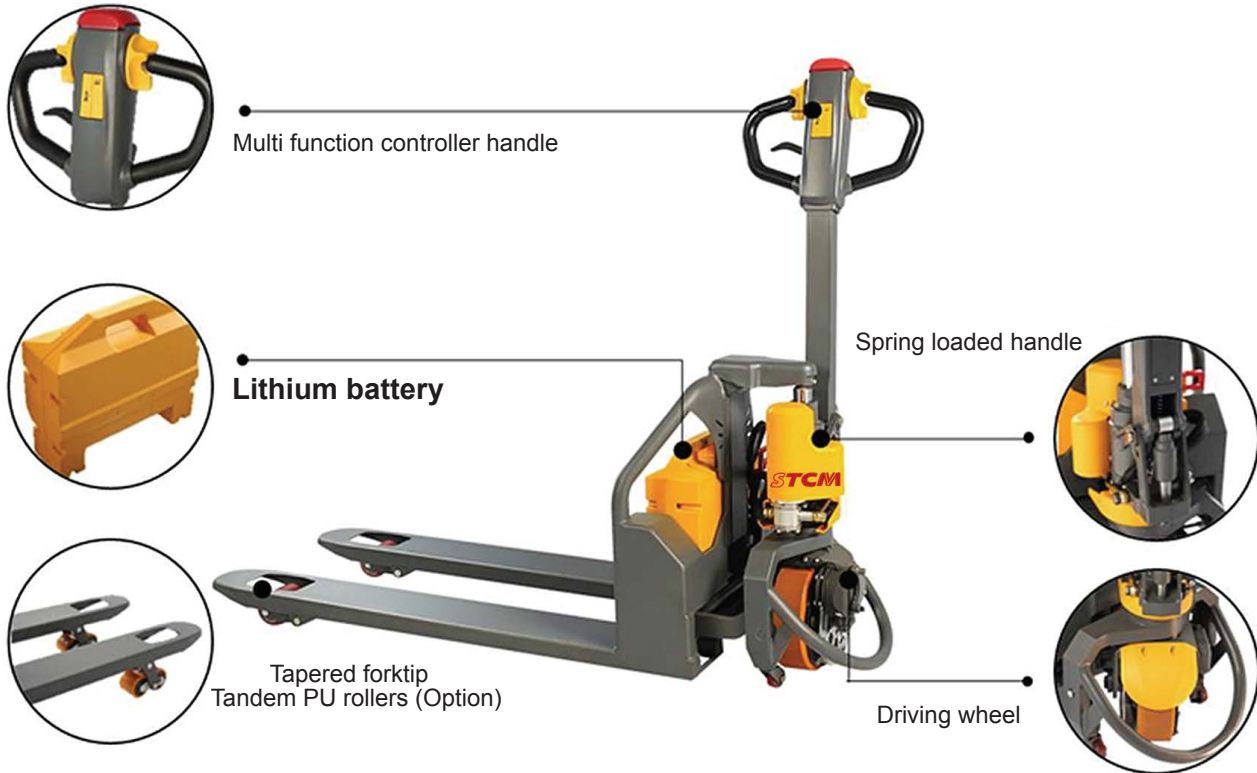
# Electric Pallet Truck with Lithium Battery **STCM**

## Model **CGPW12W-Li**

### Advantages:

- 48V large capacity maintenance-free lithium battery, long working time around 6hours.
- The charging time only needs 3 hours.
- 10 seconds replacement of the battery(two groups exchanged battery can be used for 24 hours of continuous work).
- Brushless motor, maintenance-free, high efficiency.
- Stepless speed, smooth speed changing.
- Small and beautiful, flexible steering, which can successfully enter the narrow space, such as elevators, small super market.





**LITHIUM BATTERY**



**Charging Time**  
**3HR**

Fast and short boost charge, only 3 hours charging is sufficient to achieve full charge.



**Working Time**  
**6HR**

Powerful and robust energy. 48V/20Ah battery voltage. A fully charged battery can work continuously for 6 hours.



**Work Shift**  
**24HR**

Prepare just two pieces of lithium batteries. One charging, one working, 24 hours without break.



**Multi-function Control Handle**

incorporates butterfly-style thumb controls, emergency reverse button, horn button and key switch for ease of use.

**Ergonomic Spring-loaded**

steering handle with comfort grip for reduced operator fatigue.

**Long Tiller with Large Hand Grip**

for easy and comfortable hold, strain-free operation.

**Plug-in Battery Design**

makes it easier to remove and change, no need additional tools or devices.

**Integrated Rocker Arm**

The rocker arm is casted in single piece, intensifying the strength and structure.

**Compact Vehicle Design**

Rugged and high-performing yet light weight body provides exceptional maneuverability in tight areas.

**Less Wiring, Easy Service**

Mechanical and electronic components are easy to change and service.

**Brushless Motor**

Stepless speed control provides better and smoother speed changing.

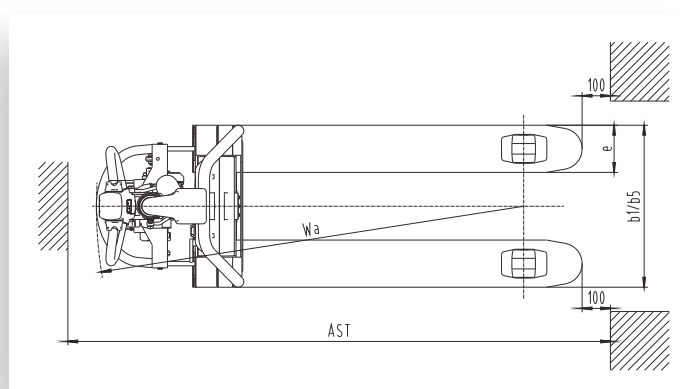
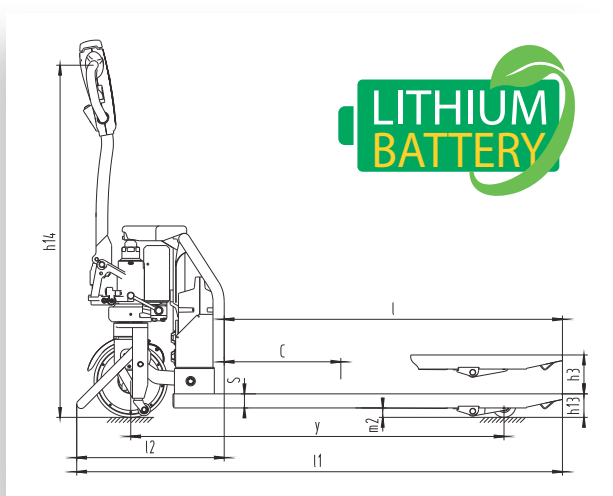
Brushless motor is easy for maintenance.

# CGPW15W-Li

**Range of application**

- Indoor use, light duty work
- Warehouses freight handling
- Retail outlets
- Beverage distribution
- Chemical handling and processing facilities

Model		CGPW12W-Li	CGPW15W-Li
Load capacity	Q(kg)	1200	1500
Load centre distance	c(mm)	600	600
Fork height, lowered	h13(mm)	80	80
Tyre size, front	mm	φ250	φ250
Tyre size, rear	mm	φ80	φ80
Wheels, number front rear (x=driven wheels)		1x-2/4	1x-2/4
Max. Lift height	h3(mm)	110	110
Height of tiller in drive position min./max.	h14(mm)	635/1200	635/1200
Overall length	l1(mm)	1651/1721	1651/1721
Length to face of forks	l2(mm)	501	501
Overall width	b1(mm)	550/680	550/685
Fork dimensions	s/e/l(mm)	45/160/1150(1220)	45/160/1150(1220)
Width overall forks	b5(mm)	550/680	550/685
Aisle width for pallets 1000×1200 crossways	Ast(mm)	1850/1920	1850/1920
Aisle width for pallets 800×1200 lengthways	Ast(mm)	1900/1920	1900/1920
Turning radius	Wa(mm)	1452/1522	1452/1522
Travel speed, laden/unladen	Km/h	4/4.5	4/4.5
Max. gradeability, laden/unladen	%	5/20	4/20
Battery voltage,nominal capacity K5	V/Ah	48/20	48/20
Battery weight	kg	10	10
Battery dimensions l/w/h	mm	340x130x307	340x130x307
Service weight (with battery)	kg	140	145



Conforms to EN ISO 3691-1  
 EN1175-1  
 EN16307-1  
 Based on Directive 2006/42/EC  
 Conform to EN Standard 12895  
 Based on directive: 2014/30/EU (EMC)