

## Model **FGC 15-40**

Cap.

1.5-1.8 TON 2.0-2.5 TON 3.0-3.5 TON

Altura. 2.00/6.00m



### New Designed Radiator

The new downsize water room of radiator reduces thickness of water conduits and extends wave length to increase ventilation and air flow rates.



### Multifunctional Dashboard

The newly designed dashboard is installed with larger screen and constant status is noticeable.



### Easy Maintenance Oil Check

The T/M oil level can be checked easily without any disassembly.



### Easy Gas Tank Change

The LPG cylinder is easily installed and the swing down bracket makes the operator remove the tank in a lower position with minimal effort.



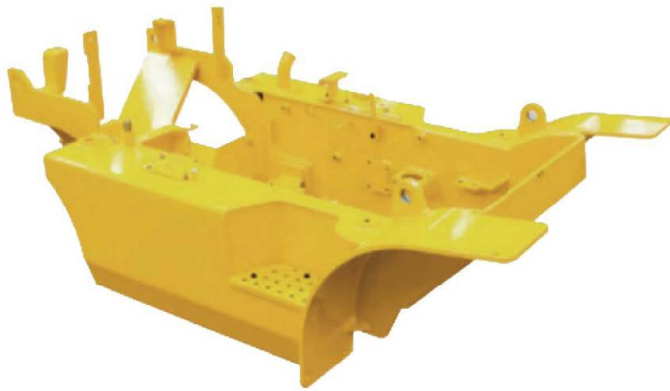
### Superior Comfort from Suspension Design

The suspension cab and seat design reduces travel vibration by 30%, so the operator feels less fatigue and greater comfort during the operations.



### Wide Opening Engine Hood

Easily accessible engine compartment assures fast and efficient maintenance.



### Heavy Duty One-Piece Truck Frame

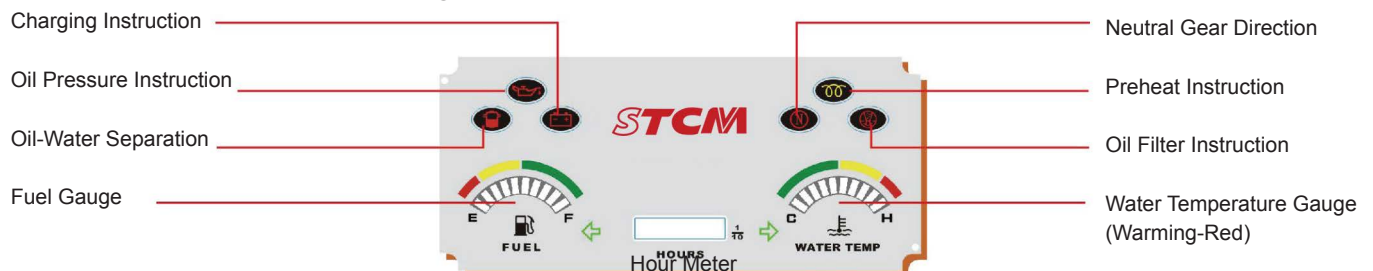
Heavy duty one-piece truck frame, with its welded and formed steel plate design, protects it from impact damage and extends truck's lift span.



### Easy Change of Air Cleaner

The air filter is readily accessible for cleaning or replacement. Quick and Easy Engine Oil Check

The meter and warning indicator panels provide vital and operational data that include.



## Advanced Safety



### Strong Overhead Guard

Exceeding CE or ANSI regulations, the overhead guard offers optimal protection combined with excellent all-around visibility and reduces potential danger.



### Excellent Visibility for Safe Operation

Optimized lift cylinder arrangement provides operator with wider visibility, the panoramic mirror expands the driver's view when backing up.

# 10%

### Steering System

The hydraulic steering system reduces the loss of hydraulic and improves energy efficiency.

# 25%

### Lifting & Driving System

The unique hydraulic technology increases lifting speed 25% and improves the driving speed.

### Excellent hydraulic system shows great performance in all aspects below.

- Uses a load-sensing flow control valve for steering to reduce horsepower loss and heat buildup.
- The main hydraulic valve incorporates adjustable flow controls for tilt and auxiliary functions.
- Allows for easy addition of extra functions and simplifies service.
- Controlled lowering speed independent of load speed.

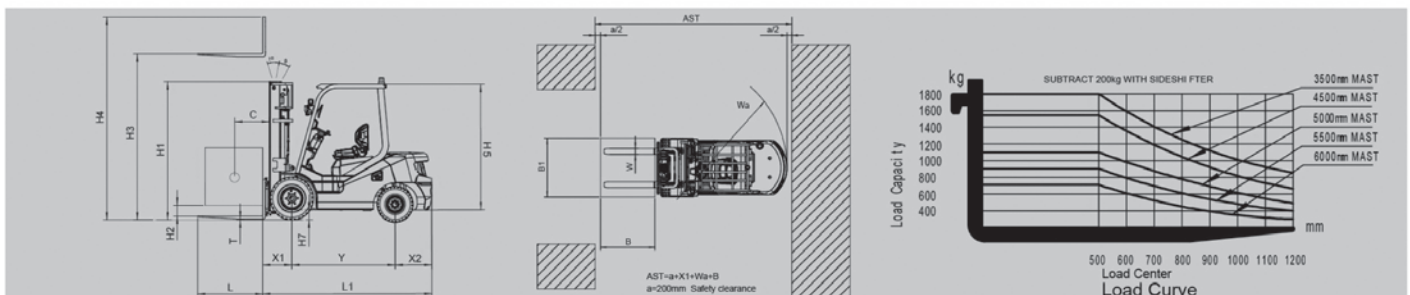


Model FGC 15-40

MAIN SPECIFICATIONS

Gasoline & LPG Forklift 1.5 - 1.8 T

General	1	Model		FGL15T-JBN	FGL18T-JBN	
				FG15T-JBN	FG18T-JBN	
	2	Power Type		Gasoline / LPG		
					3	Rated Load Capacity
	4	Load centre	C(mm)	500		
Characteristic & Dimension	5	Rated Lift Height	H3(mm)	3000		
	6	Free Lift Height	H2(mm)	100		
	7	Fork Size(L x W x T)	mm	920x120x35	1070x120x40	
	8	Mast Tilt Angle(F/R, $\alpha^\circ / \beta^\circ$ )	deg	6° / 12°		
	9	Fork Overhang(Wheel Center to Fork Face)	x1(mm)	409		
	10	Rear Overhang	x2(mm)	470		
	11	Ground Clearance(Bottom of Mast)	H7(mm)	110		
	12	Length to Face of Fork(without Fork)	L1(mm)	2285		
	13	Overall Width	B1(mm)	1082		
	14	Mast Lowered Height	H1(mm)	2025		
	15	Mast Extended Height(with Backrest)	H4(mm)	4055		
	16	Overhead Guard Height	H5(mm)	2160		
	17	Turning Radius (Outside)	Wa(mm)	2100		
	18	Min Aisle width for pallets	Astmm	3700		
Performance	19	Travel Speed (No Load)	km/h	14.5		
	20	Lifting Speed (Full Load)	mm/sec	560		
	21	Max. Gradeability (Full Load)	%	20		
	22	Front Tread	B2(mm)	890		
	23	Rear Tread	B3(mm)	920		
	24	Wheelbase	Y(mm)	1410		
Weight	25	Total Weight	kg	2860	2990	
	26	Front Axle Weight Distribution (Full Load/No Load)	kg	3815/1200	4120/1170	
	27	Rear Axle Weight Distribution (Full Load/No Load)	kg	545/1660	720/1820	
Transmission	28	Battery	V/Ah	12/60		
	29	Engine Model		K21		
	30	Engine Manufacturer		NISSAN		
	31	Rated Output / r.p.m.	kw	31.5/2300		
	32	Transmission Type		Powershift (Manual)		
	33	Transmission Stage (FWD/RVS)		1/1(2/2)		
	34	Operating pressure(For Attachments)	Mpa	14.5		



## 1.5-1.8 TON MAST SPECIFICATIONS & RATED CAPACITIES

Mast Type	Mast Name	Max Fork Height(mm)	Load Capacity(kg)				Overall Height (mm)			Free Lift (mm)		Tilt Angle (Single)	Tilt Angle (Double)	Total Weight(kg)	
			1.5t	1.8t	Lowered	Extended		Without Backrest	With Bracket	1.5t/1.8t	1.5t			1.8t	
						Without Backrest	With Backrest								
Wide View Mast	M300	3000	1500	1800	2025	3575	4055	100	100	6-12		2860	2990		
	M330	3300	1500	1800	2175	3875	4355	100	100	6-12		2875	3005		
	M350	3500	1500	1800	2275	4075	4555	100	100	6-12		2885	3015		
	M400	4000	1500	1750	2575	4575	5055	100	100	6-6	*6-12	2925	3055		
	M430	4300	1300	1650	2725	4875	5355	100	100	6-6	*6-12	2940	3070		
	M450	4500	1250	1550	2825	5075	5555	100	100	6-6	*6-12	2955	3085		
	M470	4700	1100	1400	2925	5275	5755	100	100	6-6	*6-12	2965	3095		
	M500	5000	950	1050	3125	5575	6055	100	100	6-6	*6-6	2995	3125		
	M550	5500	800	900	3375	6075	6555	100	100	3-6	*3-6	3020	3050		
	M600	6000	600	700	3625	6575	7055	100	100	3-6	*3-6	3045	3175		
2-Stage Full Free Wide View Mast	FM300	3000	1500	1800	2025	3570	4050	1460	980	6-12	*6-12	2935	3065		
	FM330	3300	1500	1800	2175	3920	4400	1610	1130	6-12	*6-12	2950	3080		
	FM350	3500	1500	1800	2275	4070	4550	1710	1230	6-12	*6-12	2960	3090		
	FM400	4000	1500	1800	2625	4570	5050	2000	1580	6-6	*6-12	3000	3130		
3-Stage Full Free Wide View Mast	TFM400	4000	1500	1800	1925	4570	5035	1300	900	6-6	*6-6	3025	3155		
	TFM430	4300	1250	1550	2025	4870	5335	1400	1000	6-6	*6-6	3045	3175		
	TFM450	4500	1200	1500	2075	5070	5535	1500	1050	6-6	*6-6	3060	3190		
	TFM470	4700	1180	1400	2125	5270	5735	1565	1100	6-6	*6-6	3075	3205		
	TFM500	5000	900	1200	2225	5570	6035	1665	1200	6-6	*6-6	3100	3230		
	TFM550	5500	800	1000	2425	6070	6535	1800	1400	3-6	*3-6	3140	3270		
	TFM600	6000	600	700	2625	6570	7035	2000	1600	3-6	*3-6	3190	3320		

Note: With separated side shifter, load capacity subtract 150Kg; with integrated side shifter, load capacity subtract 50Kg.

## 2.0-2.5 TON MAST SPECIFICATIONS & RATED CAPACITIES

Mast Type	Mast Name	Max Fork Height (mm)	Load Capacity (kg)				Overall Height (mm)			Free Lift (mm)		Tilt Angle (Single)	Tilt Angle (Double)	Total Weight(kg)		
			2.0t	2.0t(Double)	2.5t	2.5t(Double)	Lowered	Extended		Without Backrest	With Backrest			2.0t/2.5t	2.0t	2.5t
								Without Backrest	With Backrest							
Wide View Mast	M300	3000		2000		2500	2055	3580	4070	100	100	6-12		3385	3605	
	M330	3300		2000		2500	2205	3880	4370	100	100	6-12		3410	3627	
	M350	3500		2000		2500	2305	4080	4570	100	100	6-12		3425	3645	
	M400	4000		2000		2450	2605	4580	5070	100	100	6-6	*6-12	3495	3685	
	M430	4300		1850		2150	2755	4880	5370	100	100	6-6	*6-12	3520	3710	
	M450	4500	1800	*1900	2000	*2400	2855	5080	5570	100	100	6-6	*6-12	3535	3725	
	M470	4700	1450	*1850	1750	*2050	2955	5280	5770	100	100	6-6	*6-12	3555	3745	
	M500	5000	1300	*1700	1600	*2100	3155	5580	6070	100	100	6-6	*6-6	3585	3775	
	M550	5500	1100	*1500	1350	*1700	3405	6080	6570	100	100	3-6	*3-6	3625	3815	
	M600	6000	950	*1300	1050	*1500	3655	6580	7070	100	100	3-6	*3-6	3665	3855	
2-Stage Full Free Wide View Mast	FM300	3000		2000		2500	2070	3605	4068	1470	1007	6-12		3455	3645	
	FM330	3300		2000		2500	2220	3955	4418	1620	1157	6-12		3480	3670	
	FM350	3500		2000		2500	2320	4105	4568	1720	1257	6-12		3495	3685	
	FM400	4000		2000		2500	2670	4605	5068	2000	1607	6-6	*6-12	3535	3725	
3-Stage Full Free Wide View Mast	TFM400	4000	2000	*2000	2500	*2500	1945	4607	5070	1300	885	6-6	*6-6	3565	3755	
	TFM430	4300	1850	*1900	2200	*2400	2045	4907	5370	1400	985	6-6	*6-6	3595	3785	
	TFM450	4500	1700	*1800	2000	*2300	2095	5107	5570	1498	1035	6-6	*6-6	3615	3805	
	TFM470	4700	1600	*1750	1900	*2200	2145	5307	5770	1548	1085	6-6	*6-6	3635	3825	
	TFM500	5000	1400	*1600	1500	*2000	2245	5607	6070	1648	1185	6-6	*6-6	3665	3855	
	TFM550	5500	1100	*1500	1200	*1800	2445	6107	6570	1800	1385	3-6	*3-6	3715	3905	
	TFM600	6000	800	*1400	850	*1600	2645	6607	7070	2000	1585	3-6	*3-6	3765	3955	
	TFM650	6500	500	*1100	550	*1200	2895	7107	7570	2200	1835	3-6	*3-6	3815	4005	
TFM700	7000	100	*700	150	*800	3095	7607	8070	2300	2035	3-6	*3-6	3865	4055		

Note: 1. With separated side shifter, load capacity subtract 200 kg; with integrated side shifter, load capacity subtract 50 kg. 2. \* (Asterisk) is for double front wheels model.

## 3.0-3.5 TON MAST SPECIFICATIONS & RATED CAPACITIES

Mast Type	Mast Name	Max Fork Height(mm)	Load Capacity (kg)				Overall Height (mm)			Free Lift (mm)		Tilt Angle(Single)	Tilt Angle(Double)	Total Weight(kg)		
			3.0t	3.0t(Double)	3.5t	3.5t (Double)	Lowered	Extended		Without Backrest	With Backrest			3.0t/3.5t	3.0t	3.5t
								Without Backrest	With Backrest							
Wide View Mast	M300	3000		3000		3500	2070	3595	4070	100	100	6-12		4460	4775	
	M330	3300		3000		3500	2220	3895	4370	100	100	6-12		4485	4800	
	M350	3500		3000		3500	2320	4095	4570	100	100	6-12		4500	4825	
	M400	4000		2950		3250	2620	4595	5070	100	100	6-6	*6-12	4540	4885	
	M430	4300		2800		3100	2770	4895	5370	100	100	6-6	*6-12	4565	4890	
	M450	4500	2600	*2900	2900	*3000	2870	5095	5570	100	100	6-6	*6-12	4580	4905	
	M470	4700	2500	2800	2800	2900	2970	5295	5770	100	100	6-6	*6-12	4595	4920	
	M500	5000	2200	*2500	2400	*2800	3170	5595	6070	100	100	6-6	*6-6	4630	4955	
	M550	5500	2000	*2400	2200	*2600	3420	6095	6570	100	100	3-6	*3-6	4680	5005	
	M600	6000	1500	*2000	1600	*2400	3670	6595	7070	100	100	3-6	*3-6	4720	5045	
2-Stage Full Free Wide View Mast	FM300	3000		3000		3500	2070	3590	4065	1382	907	6-12		4540	4885	
	FM330	3300		3000		3500	2220	3940	4415	1532	1057	6-12		4565	4890	
	FM350	3500		3000		3500	2320	4090	4565	1632	1157	6-12		4580	4905	
	FM400	4000		3000		3250	2670	4590	5065	1982	1507	6-6	*6-12	4620	4945	
3-Stage Full Free Wide View Mast	TFM400	4000	3000	*3000	3000	*3500	1960	4700	5175	1272	797	6-6	*6-6	4670	4995	
	TFM430	4300	2800	*2900	3000	*3350	2060	5000	5475	1372	897	6-6	*6-6	4700	5025	
	TFM450	4500	2600	*2800	2800	*3200	2110	5200	5675	1422	947	6-6	*6-6	4720	5045	
	TFM470	4700	2400	*2700	2500	*3000	2160	5400	5875	1472	997	6-6	*6-6	4740	5065	
	TFM500	5000	2100	*2400	2300	*2800	2260	5700	6175	1572	1097	6-6	*6-6	4750	5075	
	TFM550	5500	1650	*2250	1800	*2550	2460	6200	6675	1772	1297	3-6	*3-6	4800	5125	
	TFM600	6000	1200	*2100	1300	*2300	2660	6700	7175	1972	1497	3-6	*3-6	4870	5195	
	TFM650	6500	950	*1700	1050	*1800	2910	7200	7675	2200	1747	3-6	*3-6	5020	5345	
TFM700	7000	650	*1400	750	*1500	3110	7700	8175	2300	1947	3-6	*3-6	5070	5395		

Note: 1. With separated side shifter, load capacity subtract 200 kg; with integrated side shifter, load capacity subtract 50 kg. 2. \* (Asterisk) is for double front wheels model.