

Model RCCP

AC



More productive and comfortable operation space



Multi-function control Joy-stick



Advantages:

SAFETY AND STABILITY

- This feature appears especially important when in or out of the container, and carrying goods in congested area and narrow aisle. Standing type design with wide view, clear visibility.
- Imported drive wheel and mast.
- With multi-function LED display with BID can be programmed, include battery discharge, faulty code, drive direction, hour meter, brake situation etc.
- Advanced AC control system offers strong driven ability. No brush with generative brake.
- Offers three type driven speed : low speed, normal speed, high speed. You may choice according to different request.
- Multi-function type joy stick can control forward, reverse, mast lifting/lowering tilting and sideshift etc. Easy to operate.
- Germany made magnetic multi-valve, with proportional valve and offers adjustable lifting/lowering speed
- Wet disc brake.
- With small turning radius 1440 mm and aisle width smallest is 3060 mm.

OFFERS 6 TYPE CONTROL SPEED

- **System Controlled Hydraulic Speeds:** The hydraulic system automatically controls tilt and stable side-shift speed to increase forklift stability and operator confidence.
- **Travel Speed Control:** Truck can automatically controls travel speeds and braking based on fork height and other operating conditions.
- **Cornering Speed Control:** The truck will automatically adjust travel speed when steering.
- **Ramp Speed Control:** The intelligent control system can maintains holds truck stopped on the ramp until the operator start travel forward at a constant speed.

- **Safe Speed Control:** The forklift will slow down automatically if the foot of the operator places out of the standing platform.
- **Lift/lower Speed Control:** The operator can adjust the lift and lower speed by control handle.

ERGONOMICS

- With adjustable armrest, comfortable and stable. Suit for different height driver using.
- Large compartment for standing, with foot relax plate, can effectively relax foot while static operation.
- The standing platform has a good shock absorption, conform to ergonomic design to make the operation more comfortable.
- The adjustable armrest and seat provides padded support to ensure the hand comfortable and stable, and meet different requirements for the operators.

SERVICE ABILITY

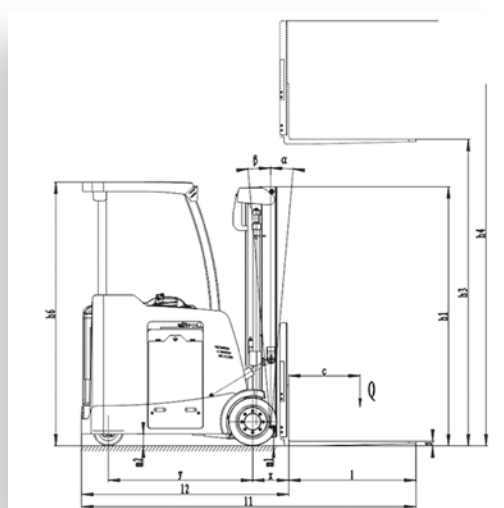
- Easy reach to electrical system while open the front cover, easy for maintenance.
- Driving motor and lifting motor are all with AC system, brushless easy to maintain external encoder is easy to replace.
- Sideway moving battery with lock system it is convenience for maintenance.
- Lifting function will be cut off while battery discharge is over 80%.
- The multi-function display with error code can easy to check troubles of truck.

Option

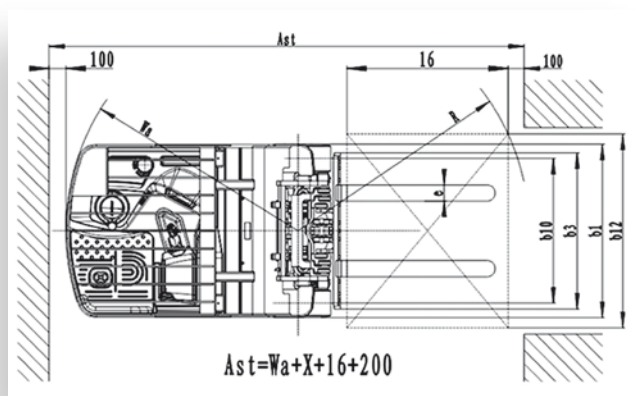
- Reading light
- Electric fan
- Sideshift and other accessories of the forklift

Model		RCPP-16	RCPP-18
Load capacity/rated load	Q(kg/lb)	1600 / 3500	1800 / 4000
Load center distance	c(mm)	600	600
Distance from front axle to fork	x(mm)	300	300
Wheelbase	y(mm)	1200	1260
Service weight (without battery)	kg	3060	3120
Tyre size, front	spring solid wheel	16x7x10.5	16x7x10.5
Tyresize, rear	solid wheel	10x5x6.5	10x5x6.5
Wheel, number-front		2	2
Wheel number-rear		2	2
Thread-front	b10 (mm)	896	896
Thread-rear	b11 (mm)	176	176
Tilt of mast/fork carriage forward		5	5
Tilt of mast/fork carriage backward		5	5
Mast height, lowered	h1 (mm)	2000-2595	2000-2595
Free lift height	h2 (mm)	option	option
Lift height	h3 (mm/inch)	3000-6000/118-236	3000-6000/118-236
Height, mast extended	h4 (mm)	4050-7050	4050-7050
Overall width	b1 (mm)	1075	1075
Fork dimensions	s/e/l (mm)	40/100/920(1070)	40/100/920(1070)
Fork frame width	b3 (mm)	1000	1000
Bottom of mast height, laden	m1 (mm)	70	70
Truck body height off the ground	m2 (mm)	90	90
Aisle width for pallets 1000 x 1200 crossways	Ast (mm)	3060	3120
Aisle width for pallets 800 x 1200 lengthways	Ast (mm)	3160	3220
Turning radius	Wa (mm)	1440	1500
Travel speed, laden/unladen	km/h	9/9.5	9/9.5
Gradeability, laden/unladen	%	10/15	10/15
Brake		Electric	Electric
System pressure	bar	150	160
Battery voltage,nominal capacity	V/Ah	36/800	36/900
Battery weight	kg	920-980	1100-1160
Travel control		AC	AC

Remark: The data is based on the lifting height 3000 mm; Lifting height from 3000 mm to 6000 mm are available



Latered of View RCPP



Top of View RCPP